

Rab 11B Polyclonal Antibody

Description

Product type	Primary Antibody
Code	BT-AP07532
Host	Rabbit
Isotype	IgG
Size	20ul, 50ul, 100ul
Immunogen	The antiserum was produced against synthesized peptide derived from human RAB11B. AA range:164-213
Mol wt	24489
Species reactivity	Human, Mouse, Rat
Clonality	Polyclonal
Recommended application	WB, ELISA
Concentration	1 mg/ml
Full name	Rab 11B Antibody
Synonyms	RAB11B; YPT3; Ras-related protein Rab-11B; GTP-binding protein YPT3

This product is for research use only, not for use in human, therapeutic or diagnostic procedure.

Background

The Ras superfamily of small GTP-binding proteins, which includes the Ras (see MIM 190020), Ral (see MIM 179550), Rho (see MIM 165390), Rap (see MIM 179520), and Rab (see MIM 179508) families, is involved in controlling a diverse set of essential cellular functions. The Rab family, including RAB11B (RAB11B, member RAS oncogene family), appears to play a critical role in regulating exocytotic and endocytotic pathways.

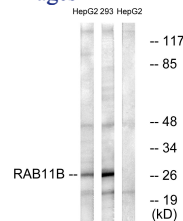
Recommended Dilution

WB: 1: 500 - 1: 2000

ELISA: 1: 10000

Not yet tested in other applications.

Images



Western blot analysis of lysates from HepG2 and 293 cells, using RAB11B Antibody. The lane on the right is blocked with the synthesized peptide.

Storage

-20°C for one year