

Rab 18 Polyclonal Antibody

Description

Product type	Primary Antibody
Code	BT-AP07533
Host	Rabbit
Isotype	IgG
Size	20ul, 50ul, 100ul
Immunogen	The antiserum was produced against synthesized peptide derived from human RAB18. AA range:103-152
Mol wt	22977
Species reactivity	Human, Mouse, Rat
Clonality	Polyclonal
Recommended application	WB, ELISA
Concentration	1 mg/ml
Full name	Rab 18 Antibody
Synonyms	RAB18; Ras-related protein Rab-18

This product is for research use only, not for use in human, therapeutic or diagnostic procedure.

Background

The RAB18, member RAS oncogene family encoded by RAB18 is a member of a family of Ras-related small GTPases that regulate membrane trafficking in organelles and transport vesicles. Knockdown studies in zebrafish suggest that this protein may have a role in eye and brain development. Mutations in this gene are associated with Warburg micro syndrome type 3. Alternatively spliced transcript variants have been found for this gene.

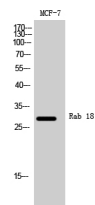
Recommended Dilution

WB: 1: 500 - 1: 2000

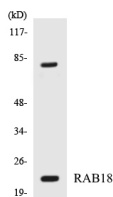
ELISA: 1: 10000

Not yet tested in other applications.

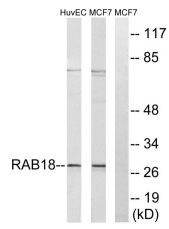
Images



Western Blot analysis of MCF-7 cells using Rab 18 Polyclonal Antibody



Western blot analysis of the lysates from HepG2 cells using RAB18 antibody.



Western blot analysis of lysates from MCF-7 and HUVEC cells, using RAB18 Antibody. The lane on the right is blocked with the synthesized peptide.

Storage

-20°C for one year

501 Changsheng S Rd, Nanhu Dist, Jiaxing, Zhejiang, China

Tel: 86 21 31007137 | E-mail: save@bt-laboratory.com | www.bt-laboratory.com