

## Rab 20 Polyclonal Antibody

### Description

<b>Product type</b>	Primary Antibody
<b>Code</b>	BT-AP07535
<b>Host</b>	Rabbit
<b>Isotype</b>	IgG
<b>Size</b>	20ul, 50ul, 100ul
<b>Immunogen</b>	The antiserum was produced against synthesized peptide derived from human RAB20. AA range:115-164
<b>Mol wt</b>	26277
<b>Species reactivity</b>	Human
<b>Clonality</b>	Polyclonal
<b>Recommended application</b>	WB, IHC-p, ELISA
<b>Concentration</b>	1 mg/ml
<b>Full name</b>	Rab 20 Antibody
<b>Synonyms</b>	RAB20; Ras-related protein Rab-20

This product is for research use only, not for use in human, therapeutic or diagnostic procedure.

### Background

RAB20 (RAB20, Member RAS Oncogene Family) is a Protein Coding gene. Among its related pathways are Sertoli-Sertoli Cell Junction Dynamics. Gene Ontology (GO) annotations related to RAB20 include GTP binding and GTPase activity. An important paralog of RAB20 is RAB5C.

### Recommended Dilution

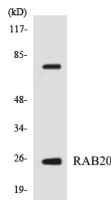
WB: 1: 500 - 1: 2000

IHC: 1: 100 - 1: 300

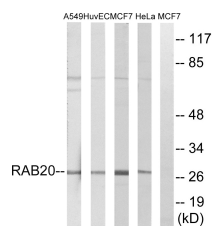
ELISA: 1: 10000

Not yet tested in other applications.

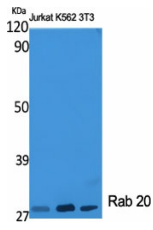
### Images



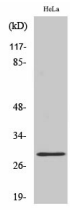
Western blot analysis of the lysates from HeLa cells using RAB20 antibody.



Western blot analysis of lysates from HeLa, MCF-7, HUVEC, and A549 cells, using RAB20 Antibody. The lane on the right is blocked with the synthesized peptide.



Western Blot analysis of various cells using Rab 20 Polyclonal Antibody diluted at 1:2000



Western Blot analysis of A549 cells using Rab 20 Polyclonal Antibody diluted at 1:2000

### Storage

-20°C for one year

501 Changsheng S Rd, Nanhu Dist, Jiaxing, Zhejiang, China

Tel: 86 21 31007137 | E-mail: [save@bt-laboratory.com](mailto:save@bt-laboratory.com) | [www.bt-laboratory.com](http://www.bt-laboratory.com)