

## Rab 2B Polyclonal Antibody

### Description

<b>Product type</b>	Primary Antibody
<b>Code</b>	BT-AP07539
<b>Host</b>	Rabbit
<b>Isotype</b>	IgG
<b>Size</b>	20ul, 50ul, 100ul
<b>Immunogen</b>	The antiserum was produced against synthesized peptide derived from human RAB2B. AA range:103-152
<b>Mol wt</b>	24214
<b>Species reactivity</b>	Human, Mouse, Rat
<b>Clonality</b>	Polyclonal
<b>Recommended application</b>	WB, ELISA
<b>Concentration</b>	1 mg/ml
<b>Full name</b>	Rab 2B Antibody
<b>Synonyms</b>	RAB2B; Ras-related protein Rab-2B

This product is for research use only, not for use in human, therapeutic or diagnostic procedure.

### Background

Members of the Rab protein family are nontransforming monomeric GTP-binding proteins of the Ras superfamily that contain 4 highly conserved regions involved in GTP binding and hydrolysis. Rab proteins are prenylated, membrane-bound proteins involved in vesicular fusion and trafficking.

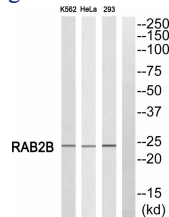
### Recommended Dilution

WB: 1: 500 - 1: 2000

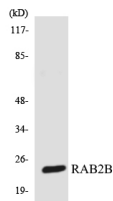
ELISA: 1: 10000

Not yet tested in other applications.

### Images



Western blot analysis of RAB2B Antibody. The lane on the right is blocked with the RAB2B peptide.



Western blot analysis of the lysates from 293 cells using RAB2B antibody.

### Storage

-20°C for one year

