

Rab 3 GAP p130 Polyclonal Antibody

Description

Product type	Primary Antibody
Code	BT-AP07540
Host	Rabbit
Isotype	IgG
Size	20ul, 50ul, 100ul
Immunogen	The antiserum was produced against synthesized peptide derived from human RAB3GAP1. AA range:538-587
Mol wt	110524
Species reactivity	Human
Clonality	Polyclonal
Recommended application	WB, IHC-p, ELISA
Concentration	1 mg/ml
Full name	Rab 3 GAP p130 Antibody
Synonyms	RAB3GAP1; KIAA0066; RAB3GAP; Rab3 GTPase-activating protein catalytic subunit; RAB3 GTPase-activating protein 130 kDa subunit; Rab3-GAP p130; Rab3-GAP

This product is for research use only, not for use in human, therapeutic or diagnostic procedure.

Background

RAB3GAP1 encodes the catalytic subunit of a Rab GTPase activating protein. RAB3 GTPase activating protein catalytic subunit 1 forms a heterodimer with a non-catalytic subunit to specifically regulate the activity of members of the Rab3 subfamily of small G proteins. RAB3 GTPase activating protein catalytic subunit 1 mediates the hydrolysis of GTP bound Rab3 to the GDP bound form. Mutations in RAB3GAP1 are associated with Warburg micro syndrome. Alternate splicing results in multiple transcript variants.

Recommended Dilution

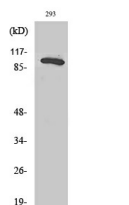
WB: 1: 500 - 1: 2000

IHC: 1: 100 - 1: 300

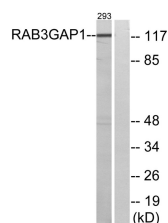
ELISA: 1: 40000

Not yet tested in other applications.

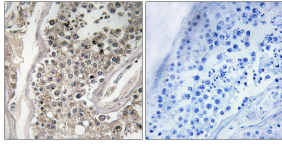
Images



Western Blot analysis of various cells using Rab 3 GAP p130 Polyclonal Antibody diluted at 1:2000



Western blot analysis of lysates from 293 cells, using RAB3GAP1 Antibody. The lane on the right is blocked with the synthesized peptide.



Immunohistochemistry analysis of paraffin-embedded human testis tissue, using RAB3GAP1 Antibody. The picture on the right is blocked with the synthesized peptide.

Storage

-20°C for one year

501 Changsheng S Rd, Nanhu Dist, Jiaxing, Zhejiang, China

Tel: 86 21 31007137 | E-mail: save@bt-laboratory.com | www.bt-laboratory.com