

Rab 31 Polyclonal Antibody

Description

Product type	Primary Antibody
Code	BT-AP07542
Host	Rabbit
Isotype	IgG
Size	20ul, 50ul, 100ul
Immunogen	Synthesized peptide derived from Rab 31 . at AA range: 50-130
Mol wt	21569
Species reactivity	Human, Mouse, Rat
Clonality	Polyclonal
Recommended application	WB, ELISA
Concentration	1 mg/ml
Full name	Rab 31 Antibody
Synonyms	RAB31; RAB22B; Ras-related protein Rab-31; Ras-related protein Rab-22B

This product is for research use only, not for use in human, therapeutic or diagnostic procedure.

Background

Small GTP-binding proteins of the RAB family, such as RAB31, play essential roles in vesicle and granule targeting (Bao et al. 2002 [PubMed 11784320]).

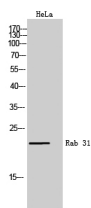
Recommended Dilution

WB: 1: 500 - 1: 2000

ELISA: 1: 20000

Not yet tested in other applications.

Images



Western Blot analysis of HeLa cells using Rab 31 Polyclonal Antibody

Storage

-20°C for one year