

## Rab 33A Polyclonal Antibody

### Description

<b>Product type</b>	Primary Antibody
<b>Code</b>	BT-AP07543
<b>Host</b>	Rabbit
<b>Isotype</b>	IgG
<b>Size</b>	20ul, 50ul, 100ul
<b>Immunogen</b>	The antiserum was produced against synthesized peptide derived from human RAB33A. AA range:132-181
<b>Mol wt</b>	26593
<b>Species reactivity</b>	Human, Mouse, Rat
<b>Clonality</b>	Polyclonal
<b>Recommended application</b>	WB, ELISA
<b>Concentration</b>	1 mg/ml
<b>Full name</b>	Rab 33A Antibody
<b>Synonyms</b>	RAB33A; RABS10; Ras-related protein Rab-33A; Small GTP-binding protein S10

**This product is for research use only, not for use in human, therapeutic or diagnostic procedure.**

### Background

The protein encoded by RAB33A (RAB33A, member RAS oncogene family) belongs to the small GTPase superfamily, Rab family. It is GTP-binding protein and may be involved in vesicle transport.

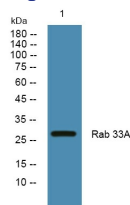
### Recommended Dilution

WB: 1: 500 - 1: 2000

ELISA: 1: 20000

Not yet tested in other applications.

### Images



Western blot analysis of lysates from SH-SY5Y cells, primary antibody was diluted at 1:1000, 4° over night

### Storage

-20°C for one year