

## Rab 34 Polyclonal Antibody

### Description

<b>Product type</b>	Primary Antibody
<b>Code</b>	BT-AP07544
<b>Host</b>	Rabbit
<b>Isotype</b>	IgG
<b>Size</b>	20ul, 50ul, 100ul
<b>Immunogen</b>	The antiserum was produced against synthesized peptide derived from human RAB34. AA range:206-255
<b>Mol wt</b>	29044
<b>Species reactivity</b>	Human
<b>Clonality</b>	Polyclonal
<b>Recommended application</b>	WB, IHC-p, ELISA
<b>Concentration</b>	1 mg/ml
<b>Full name</b>	Rab 34 Antibody
<b>Synonyms</b>	RAB34; RAB39; RAH; Ras-related protein Rab-34; Ras-related protein Rab-39; Ras-related protein Rah

**This product is for research use only, not for use in human, therapeutic or diagnostic procedure.**

### Background

RAB34 encodes a protein belonging to the RAB family of proteins, which are small GTPases involved in protein transport. This family member is a Golgi-bound member of the secretory pathway that is involved in the repositioning of lysosomes and the activation of macropinocytosis. Alternative splicing of RAB34 results in multiple transcript variants. RAB34 overlaps and shares exon structure with the nine-amino acid residue-repeats (NARR) gene, which encodes a functionally distinct nucleolar protein from a different reading frame.

### Recommended Dilution

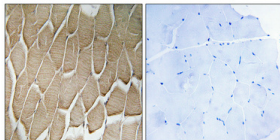
WB: 1: 500 - 1: 2000

IHC: 1: 100 - 1: 300

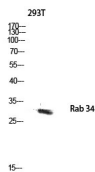
ELISA: 1: 5000

Not yet tested in other applications.

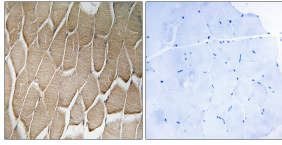
### Images



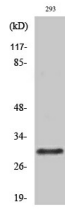
Immunohistochemical analysis of paraffin-embedded Human skeletal muscle. Antibody was diluted at 1:100(4° overnight). High-pressure and temperature Tris-EDTA,pH8.0 was used for antigen retrieval. Negative contrl (right) obtaned from antibody was pre-absorbed by immunogen peptide.



Western blot analysis of 293T lysis using Rab 34 antibody. Antibody was diluted at 1:500



Immunohistochemistry analysis of paraffin-embedded human skeletal muscle, using RAB34 Antibody. The picture on the right is blocked with the synthesized peptide.



Western Blot analysis of various cells using Rab 34 Polyclonal Antibody diluted at 1:500

### Storage

-20°C for one year

501 Changsheng S Rd, Nanhu Dist, Jiaxing, Zhejiang, China

Tel: 86 21 31007137 | E-mail: [save@bt-laboratory.com](mailto:save@bt-laboratory.com) | [www.bt-laboratory.com](http://www.bt-laboratory.com)