

Rab 35 Polyclonal Antibody

Description

Product type	Primary Antibody
Code	BT-AP07545
Host	Rabbit
Isotype	IgG
Size	20ul, 50ul, 100ul
Immunogen	The antiserum was produced against synthesized peptide derived from human RAB35. AA range:99-148
Mol wt	23025
Species reactivity	Human, Mouse, Rat
Clonality	Polyclonal
Recommended application	WB, ELISA
Concentration	1 mg/ml
Full name	Rab 35 Antibody
Synonyms	RAB35; RAB1C; RAY; Ras-related protein Rab-35; GTP-binding protein RAY; Ras-related protein Rab-1C

This product is for research use only, not for use in human, therapeutic or diagnostic procedure.

Background

RAB35 (RAB35, Member RAS Oncogene Family) is a Protein Coding gene. Diseases associated with RAB35 include myopathy, myofibrillar, 5. Among its related pathways are Endocytosis. Gene Ontology (GO) annotations related to RAB35 include GTP binding and GDP binding. An important paralog of RAB35 is RAB33A.

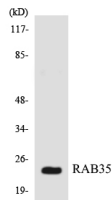
Recommended Dilution

WB: 1: 500 - 1: 2000

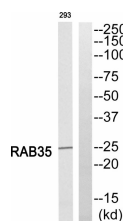
ELISA: 1: 10000

Not yet tested in other applications.

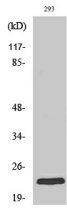
Images



Western blot analysis of the lysates from HT-29 cells using RAB35 antibody.



Western blot analysis of RAB35 Antibody. The lane on the right is blocked with the RAB35 peptide.



Western Blot analysis of various cells using Rab 35 Polyclonal Antibody

Storage

-20°C for one year

501 Changsheng S Rd, Nanhu Dist, Jiaxing, Zhejiang, China

Tel: 86 21 31007137 | E-mail: save@bt-laboratory.com | www.bt-laboratory.com