

Rab 38 Polyclonal Antibody

Description

Product type	Primary Antibody
Code	BT-AP07547
Host	Rabbit
Isotype	IgG
Size	20ul, 50ul, 100ul
Immunogen	The antiserum was produced against synthesized peptide derived from human RAB38. AA range:80-129
Mol wt	23712
Species reactivity	Human, Mouse, Rat
Clonality	Polyclonal
Recommended application	WB, ELISA
Concentration	1 mg/ml
Full name	Rab 38 Antibody
Synonyms	RAB38; Ras-related protein Rab-38; Melanoma antigen NY-MEL-1

This product is for research use only, not for use in human, therapeutic or diagnostic procedure.

Background

May be involved in melanosomal transport and docking. Involved in the proper sorting of TYRP1.

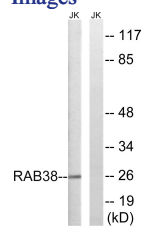
Recommended Dilution

WB: 1: 500 - 1: 2000

ELISA: 1: 20000

Not yet tested in other applications.

Images



Western blot analysis of lysates from Jurkat cells, using RAB38 Antibody. The lane on the right is blocked with the synthesized peptide.

Storage

-20°C for one year

501 Changsheng S Rd, Nanhu Dist, Jiaxing, Zhejiang, China

Tel: 86 21 31007137 | E-mail: save@bt-laboratory.com | www.bt-laboratory.com