

Rab 5A Polyclonal Antibody

Description

Product type	Primary Antibody
Code	BT-AP07550
Host	Rabbit
Isotype	IgG
Size	20ul, 50ul, 100ul
Immunogen	The antiserum was produced against synthesized peptide derived from the Internal region of human RAB5A. AA range:71-120
Mol wt	23650
Species reactivity	Human, Mouse, Rat
Clonality	Polyclonal
Recommended application	WB, IHC-p, ELISA
Concentration	1 mg/ml
Full name	Rab 5A Antibody
Synonyms	RAB5A; RAB5; Ras-related protein Rab-5A

This product is for research use only, not for use in human, therapeutic or diagnostic procedure.

Background

Required for the fusion of plasma membranes and early endosomes.

Recommended Dilution

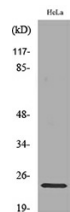
WB: 1: 500 - 1: 2000

IHC-p: 1: 100 - 1: 300

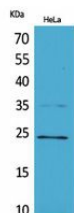
ELISA: 1: 20000

Not yet tested in other applications.

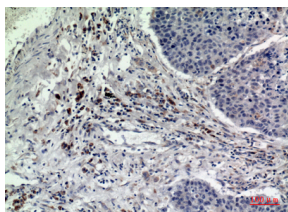
Images



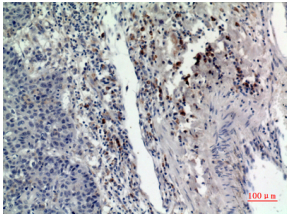
Western blot analysis of lysate from HeLa cells, using RAB5A Antibody.



Western Blot analysis of HeLa cells using Rab 5A Polyclonal Antibody. Secondary antibody was diluted at 1:20000



Immunohistochemical analysis of paraffin-embedded human-lung, antibody was diluted at 1:100



Immunohistochemical analysis of paraffin-embedded human-lung, antibody was diluted at 1:100

Storage

-20°C for one year

501 Changsheng S Rd, Nanhu Dist, Jiaxing, Zhejiang, China

Tel: 86 21 31007137 | E-mail: save@bt-laboratory.com | www.bt-laboratory.com