

Rab 6C Polyclonal Antibody

Description

Product type	Primary Antibody
Code	BT-AP07553
Host	Rabbit
Isotype	IgG
Size	20ul, 50ul, 100ul
Immunogen	The antiserum was produced against synthesized peptide derived from human RAB6C. AA range:165-214
Mol wt	28355
Species reactivity	Human, Mouse, Rat
Clonality	Polyclonal
Recommended application	WB, ELISA
Concentration	1 mg/ml
Full name	Rab 6C Antibody
Synonyms	RAB6C; WTH3; Ras-related protein Rab-6C; Rab6-like protein WTH3

This product is for research use only, not for use in human, therapeutic or diagnostic procedure.

Background

RAB6C (RAB6C, Member RAS Oncogene Family) is a Protein Coding gene. Among its related pathways are Sertoli-Sertoli Cell Junction Dynamics. Gene Ontology (GO) annotations related to RAB6C include GTP binding and GTPase activity. An important paralog of RAB6C is RAB41.

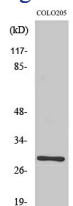
Recommended Dilution

WB: 1: 500 - 1: 2000

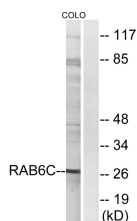
ELISA: 1: 40000

Not yet tested in other applications.

Images



Western Blot analysis of various cells using Rab 6C Polyclonal Antibody



Western blot analysis of lysates from COLO cells, using RAB6C Antibody. The lane on the right is blocked with the synthesized peptide.

Storage

-20°C for one year

