

Rab 7L1 Polyclonal Antibody

Description

Product type	Primary Antibody
Code	BT-AP07554
Host	Rabbit
Isotype	IgG
Size	20ul, 50ul, 100ul
Immunogen	The antiserum was produced against synthesized peptide derived from human RAB7L1. AA range:115-164
Mol wt	23155
Species reactivity	Human, Mouse, Rat
Clonality	Polyclonal
Recommended application	WB, ELISA
Concentration	1 mg/ml
Full name	Rab 7L1 Antibody
Synonyms	RAB7L1; Ras-related protein Rab-7L1; Rab-7-like protein 1

This product is for research use only, not for use in human, therapeutic or diagnostic procedure.

Background

RAB29 (RAB29, Member RAS Oncogene Family) is a Protein Coding gene. Gene Ontology (GO) annotations related to RAB29 include GTP binding and GTPase activity. An important paralog of RAB29 is RAB7B.

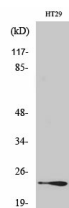
Recommended Dilution

WB: 1: 500 - 1: 2000

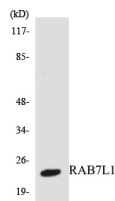
ELISA: 1: 20000

Not yet tested in other applications.

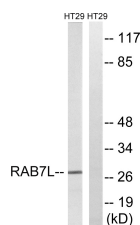
Images



Western Blot analysis of various cells using Rab 7L1 Polyclonal Antibody



Western blot analysis of the lysates from HepG2 cells using RAB7L1 antibody.



Western blot analysis of lysates from HT-29 cells, using RAB7L1 Antibody. The lane on the right is blocked with the synthesized peptide.

Storage

-20°C for one year

501 Changsheng S Rd, Nanhu Dist, Jiaxing, Zhejiang, China

Tel: 86 21 31007137 | E-mail: save@bt-laboratory.com | www.bt-laboratory.com