

## Rab L2A Polyclonal Antibody

### Description

<b>Product type</b>	Primary Antibody
<b>Code</b>	BT-AP07555
<b>Host</b>	Rabbit
<b>Isotype</b>	IgG
<b>Size</b>	20ul, 50ul, 100ul
<b>Immunogen</b>	The antiserum was produced against synthesized peptide derived from human RABL2A. AA range:179-228
<b>Mol wt</b>	26115
<b>Species reactivity</b>	Human
<b>Clonality</b>	Polyclonal
<b>Recommended application</b>	WB, ELISA
<b>Concentration</b>	1 mg/ml
<b>Full name</b>	Rab L2A Antibody
<b>Synonyms</b>	RABL2A; Rab-like protein 2A

**This product is for research use only, not for use in human, therapeutic or diagnostic procedure.**

### Background

RABL2A is a member of the RAB gene family which belongs to the RAS GTPase superfamily. RAB, member of RAS oncogene family-like 2A in the family of RAS-related signaling molecules are small GTP-binding proteins that play important roles in the regulation of exocytotic and endocytotic pathways. RABL2A maps to the site of an ancestral telomere fusion event and may be a subtelomeric gene. Alternative splicing results in multiple transcript variants encoding different isoforms.

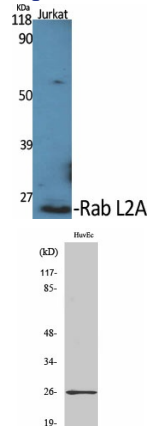
### Recommended Dilution

WB: 1: 500 - 1: 2000

ELISA: 1: 20000

Not yet tested in other applications.

### Images



Western Blot analysis of various cells using Rab L2A Polyclonal Antibody diluted at 1:500

Western Blot analysis of COLO205 cells using Rab L2A Polyclonal Antibody diluted at 1:500

## Storage

-20°C for one year

501 Changsheng S Rd, Nanhu Dist, Jiaxing, Zhejiang, China

Tel: 86 21 31007137 | E-mail: [save@bt-laboratory.com](mailto:save@bt-laboratory.com) | [www.bt-laboratory.com](http://www.bt-laboratory.com)