

Rab11-FIP3 Polyclonal Antibody

Description

Product type	Primary Antibody
Code	BT-AP07559
Host	Rabbit
Isotype	IgG
Size	20ul, 50ul, 100ul
Immunogen	The antiserum was produced against synthesized peptide derived from human RAB11FIP3. AA range:569-618
Mol wt	82440
Species reactivity	Human, Mouse, Rat
Clonality	Polyclonal
Recommended application	IHC-p, ELISA
Concentration	1 mg/ml
Full name	Rab11-FIP3 Antibody
Synonyms	RAB11FIP3; ARFO1; KIAA0665; Rab11 family-interacting protein 3; FIP3-Rab11; Rab11-FIP3; Arfophilin-1; EF hands-containing Rab-interacting protein; Eferin; MU-MB-17.148

This product is for research use only, not for use in human, therapeutic or diagnostic procedure.

Background

Proteins of the large Rab GTPase family (see RAB1A; MIM 179508) have regulatory roles in the formation, targeting, and fusion of intracellular transport vesicles. RAB11FIP3 (RAB11 family interacting protein 3) is one of many proteins that interact with and regulate Rab GTPases.

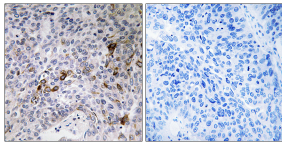
Recommended Dilution

IHC: 1: 100 - 1: 300

ELISA: 1: 10000

Not yet tested in other applications.

Images



Immunohistochemistry analysis of paraffin-embedded human lung carcinoma tissue, using RAB11FIP3 Antibody. The picture on the right is blocked with the synthesized peptide.

Storage

-20°C for one year

501 Changsheng S Rd, Nanhu Dist, Jiaxing, Zhejiang, China

Tel: 86 21 31007137 | E-mail: save@bt-laboratory.com | www.bt-laboratory.com