

CDO1 Polyclonal Antibody

Description

Product type	Primary Antibody
Code	BT-AP07571
Host	Rabbit
Isotype	IgG
Size	20ul, 50ul, 100ul
Immunogen	Synthesized peptide derived from part region of human protein
Mol wt	N/A
Species reactivity	Human, Mouse, Rat
Clonality	Polyclonal
Recommended application	WB, ELISA
Concentration	1 mg/ml
Full name	Cysteine dioxygenase type 1
Synonyms	Cysteine dioxygenase type 1 ;EC 1.13.11.20;Cysteine dioxygenase type I;CDO;CDO-I

This product is for research use only, not for use in human, therapeutic or diagnostic procedure.

Background

Catalytic activity:L-cysteine + O(2) = 3-sulfinoalanine.,cofactor: Binds 1 iron ion per subunit. Zinc to a much lesser extent.,cofactor: IRON; NAD(P)H.,Initiates several important metabolic pathways related to pyruvate and several sulfurate compounds including sulfate, hypotaurine and taurine. Critical regulator of cellular cysteine concentrations. Has an important role in maintaining the hepatic concentration of intracellular free cysteine within a proper narrow range.,induction: In hepatoblastoma HepG2 cells, down-regulated by phorbol 12-myristate 13-acetate.,pathway: Organosulfur biosynthesis; taurine biosynthesis; hypotaurine from L-cysteine: step 1/2.,PTM: The thioether cross-link between Cys-93 and Tyr-157 plays a structural role through stabilizing the Fe(2+) ion, and prevents the production of highly damaging free hydroxyl radicals by holding the oxygen radical via hydroxyl hydrogen.,Belongs to the cysteine dioxygenase family.,subunit: Monomer.,tissue specificity: Highly expressed in liver and placenta. Low expression in heart, brain and pancreas. Also detected in hepatoblastoma HepG2 cells.,

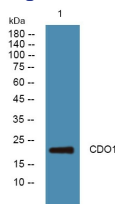
Recommended Dilution

WB: 1: 500 - 1: 2000

ELISA: 1: 5000 - 1: 20000

Not yet tested in other applications.

Images



Western blot analysis of lysates from DU145 cells, primary antibody was diluted at 1:1000, 4°C overnight

Storage

-20°C for 1 year