

CDR1 Polyclonal Antibody

Description

Product type	Primary Antibody
Code	BT-AP07572
Host	Rabbit
Isotype	IgG
Size	20ul, 50ul, 100ul
Immunogen	Synthesized peptide derived from part region of human protein
Mol wt	N/A
Species reactivity	Human, Rat, Mouse
Clonality	Polyclonal
Recommended application	WB, ELISA
Concentration	1 mg/ml
Full name	Cerebellar degeneration-related antigen 1
Synonyms	Cerebellar degeneration-related antigen 1 ;CDR34

This product is for research use only, not for use in human, therapeutic or diagnostic procedure.

Background

Autoantibodies directed against the protein encoded by this intronless gene have been found in some patients with paraneoplastic cerebellar degeneration. The encoded protein contains several hexapeptide repeats.

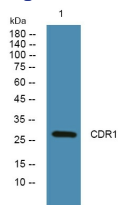
Recommended Dilution

WB: 1: 500 - 1: 2000

ELISA: 1: 5000 - 1: 20000

Not yet tested in other applications.

Images



Western blot analysis of lysates from KB cells, primary antibody was diluted at 1:1000, 4°C overnight

Storage

-20°C for 1 year