

## RAB3IP Polyclonal Antibody

### Description

<b>Product type</b>	Primary Antibody
<b>Code</b>	BT-AP07573
<b>Host</b>	Rabbit
<b>Isotype</b>	IgG
<b>Size</b>	20ul, 50ul, 100ul
<b>Immunogen</b>	The antiserum was produced against synthesized peptide derived from human RAB3IP. AA range:257-306
<b>Mol wt</b>	53021
<b>Species reactivity</b>	Human, Mouse, Rat
<b>Clonality</b>	Polyclonal
<b>Recommended application</b>	WB, IHC-p, ELISA
<b>Concentration</b>	1 mg/ml
<b>Full name</b>	RAB3IP Antibody
<b>Synonyms</b>	RAB3IP; RABIN8; Rab-3A-interacting protein; Rab3A-interacting protein; Rabin-3; SSSX2-interacting protein

**This product is for research use only, not for use in human, therapeutic or diagnostic procedure.**

### Background

Guanine nucleotide exchange factor (GEF) which may activate RAB8A and RAB8B. Promotes the exchange of GDP to GTP, converting inactive GDP-bound Rab proteins into their active GTP-bound form. Mediates the release of GDP from RAB8A and RAB8B but not from RAB3A or RAB5. Modulates actin organization and promotes polarized transport of RAB8A-specific vesicles to the cell surface. Together with RAB11A, RAB8A, the exocyst complex, PARD3, PRKCI, ANXA2, CDC42 and DNMBP promotes transcytosis of PODXL to the apical membrane initiation sites (AMIS), apical surface formation and lumenogenesis.

### Recommended Dilution

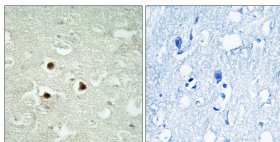
WB: 1: 500 - 1: 2000

IHC: 1: 100 - 1: 300

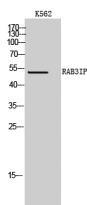
ELISA: 1: 40000

Not yet tested in other applications.

### Images



Immunohistochemistry analysis of paraffin-embedded human brain tissue, using RAB3IP Antibody. The picture on the right is blocked with the synthesized peptide.



Western Blot analysis of K562 cells using RAB3IP Polyclonal Antibody

## Storage

-20°C for one year

501 Changsheng S Rd, Nanhu Dist, Jiaxing, Zhejiang, China

Tel: 86 21 31007137 | E-mail: [save@bt-laboratory.com](mailto:save@bt-laboratory.com) | [www.bt-laboratory.com](http://www.bt-laboratory.com)