

Rabaptin-5 Alpha Polyclonal Antibody

Description

| | |
|-------------------------|--|
| Product type | Primary Antibody |
| Code | BT-AP07581 |
| Host | Rabbit |
| Isotype | IgG |
| Size | 20ul, 50ul, 100ul |
| Immunogen | The antiserum was produced against synthesized peptide derived from human RABEP1. AA range:549-598 |
| Mol wt | 99290 |
| Species reactivity | Human, Mouse, Rat |
| Clonality | Polyclonal |
| Recommended application | IHC-p, ELISA |
| Concentration | 1 mg/ml |
| Full name | Rabaptin-5alpha Antibody |
| Synonyms | RABEP1; RAB5EP; RABPT5; RABPT5A; Rab GTPase-binding effector protein 1; Rabaptin-4; Rabaptin-5; Rabaptin-5alpha; Renal carcinoma antigen NY-REN-17 |

This product is for research use only, not for use in human, therapeutic or diagnostic procedure.

Background

RABEP1 (Rabaptin, RAB GTPase Binding Effector Protein 1) is a Protein Coding gene. Among its related pathways are Endocytosis and Delta508-CFTR traffic / Sorting endosome formation in CF. GO annotations related to this gene include protein homodimerization activity and growth factor activity. An important paralog of this gene is RABEP2.

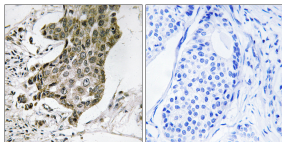
Recommended Dilution

IHC: 1: 100 - 1: 300

ELISA: 1: 40000

Not yet tested in other applications.

Images



Immunohistochemistry analysis of paraffin-embedded human breast carcinoma tissue, using RABEP1 Antibody. The picture on the right is blocked with the synthesized peptide.

Storage

-20°C for one year

501 Changsheng S Rd, Nanhu Dist, Jiaxing, Zhejiang, China

Tel: 86 21 31007137 | E-mail: save@bt-laboratory.com | www.bt-laboratory.com