

Rabaptin-5Beta Polyclonal Antibody

Description

Product type	Primary Antibody
Code	BT-AP07582
Host	Rabbit
Isotype	IgG
Size	20ul, 50ul, 100ul
Immunogen	The antiserum was produced against synthesized peptide derived from human RABEP2. AA range:353-402
Mol wt	63543
Species reactivity	Human, Mouse, Rat
Clonality	Polyclonal
Recommended application	WB, IHC-p, ELISA
Concentration	1 mg/ml
Full name	Rabaptin-5beta Antibody
Synonyms	RABEP2; RABPT5B; Rab GTPase-binding effector protein 2; Rabaptin-5beta

This product is for research use only, not for use in human, therapeutic or diagnostic procedure.

Background

RABEP2 (Rabaptin, RAB GTPase Binding Effector Protein 2) is a Protein Coding gene. Gene Ontology (GO) annotations related to RABEP2 include GTPase activator activity and growth factor activity. An important paralog of RABEP2 is RABEP1.

Recommended Dilution

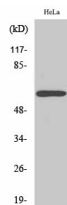
WB: 1: 500 - 1: 2000

IHC: 1: 100 - 1: 300

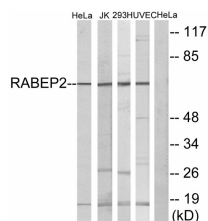
ELISA: 1: 10000

Not yet tested in other applications.

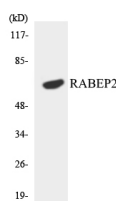
Images



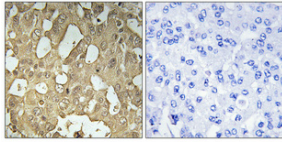
Western Blot analysis of various cells using Rabaptin-5 β Polyclonal Antibody



Western blot analysis of lysates from HeLa, Jurkat, 293, and HUVEC cells, using RABEP2 Antibody. The lane on the right is blocked with the synthesized peptide.



Western blot analysis of the lysates from HeLa cells using RABEP2 antibody.



Immunohistochemical analysis of paraffin-embedded Human breast cancer. Antibody was diluted at 1:100(4° overnight). High-pressure and temperature Tris-EDTA,pH8.0 was used for antigen retrieval. Negative control (right) obtained from antibody was pre-absorbed by immunogen peptide.

Storage

-20°C for one year

501 Changsheng S Rd, Nanhu Dist, Jiaxing, Zhejiang, China

Tel: 86 21 31007137 | E-mail: save@bt-laboratory.com | www.bt-laboratory.com