

CEA19 Polyclonal Antibody

Description

Product type	Primary Antibody
Code	BT-AP07583
Host	Rabbit
Isotype	IgG
Size	20ul, 50ul, 100ul
Immunogen	Synthesized peptide derived from part region of human protein
Mol wt	N/A
Species reactivity	Human, Rat, Mouse
Clonality	Polyclonal
Recommended application	WB, ELISA
Concentration	1 mg/ml
Full name	Carcinoembryonic antigen-related cell adhesion molecule 19
Synonyms	Carcinoembryonic antigen-related cell adhesion molecule 19 ;Carcinoembryonic antigen-like 1

This product is for research use only, not for use in human, therapeutic or diagnostic procedure.

Background

induction:Down-regulated by dexamethasone (in vitro).,Belongs to the immunoglobulin superfamily. CEA family.,tissue specificity:Ubiquitous with highest expression in prostate, uterus, fetal brain, mammary gland, adrenal gland, skeletal muscle, small intestine, and kidney, and lower expression in lung, cerebellum, testis, liver, pancreas, bone marrow and ovary.,

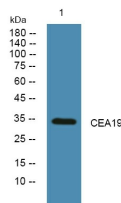
Recommended Dilution

WB: 1: 500 - 1: 2000

ELISA: 1: 5000 - 1: 20000

Not yet tested in other applications.

Images



Western blot analysis of lysates from K562 cells, primary antibody was diluted at 1:1000, 4°C overnight

Storage

-20°C for 1 year