

## Rabenosyn-5 Polyclonal Antibody

### Description

<b>Product type</b>	Primary Antibody
<b>Code</b>	BT-AP07587
<b>Host</b>	Rabbit
<b>Isotype</b>	IgG
<b>Size</b>	20ul, 50ul, 100ul
<b>Immunogen</b>	The antiserum was produced against synthesized peptide derived from human ZFYVE20. AA range:145-194
<b>Mol wt</b>	88870
<b>Species reactivity</b>	Human, Mouse
<b>Clonality</b>	Polyclonal
<b>Recommended application</b>	WB, ELISA
<b>Concentration</b>	1 mg/ml
<b>Full name</b>	Rabenosyn-5 Antibody
<b>Synonyms</b>	ZFYVE20; Rabenosyn-5; 110 kDa protein; FYVE finger-containing Rab5 effector protein rabenosyn-5; Zinc finger FYVE domain-containing protein 20

**This product is for research use only, not for use in human, therapeutic or diagnostic procedure.**

### Background

RBSN encodes a protein that belongs to the FYVE zinc finger family of proteins. RAB effector interacts with Ras-related proteins that regulate membrane trafficking. A missense mutation in RBSN is associated with a defect in the early endocytic pathway. Alternative splicing results in multiple transcript variants.

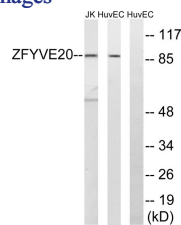
### Recommended Dilution

WB: 1: 500 - 1: 2000

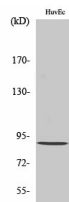
ELISA: 1: 10000

Not yet tested in other applications.

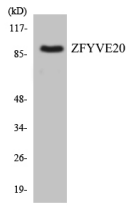
### Images



Western blot analysis of lysates from HUVEC and Jurkat cells, using ZFYVE20 Antibody. The lane on the right is blocked with the synthesized peptide.



Western Blot analysis of various cells using Rabenosyn-5 Polyclonal Antibody diluted at 1:1000



Western blot analysis of the lysates from COLO205 cells using ZFYVE20 antibody.

### Storage

-20°C for one year

501 Changsheng S Rd, Nanhu Dist, Jiaxing, Zhejiang, China

Tel: 86 21 31007137 | E-mail: [save@bt-laboratory.com](mailto:save@bt-laboratory.com) | [www.bt-laboratory.com](http://www.bt-laboratory.com)