

Rabr Polyclonal Antibody

Description

Product type	Primary Antibody
Code	BT-AP07590
Host	Rabbit
Isotype	IgG
Size	20ul, 50ul, 100ul
Immunogen	The antiserum was produced against synthesized peptide derived from human AGFG2. AA range:91-140
Mol wt	48963
Species reactivity	Human, Mouse
Clonality	Polyclonal
Recommended application	WB, ELISA
Concentration	1 mg/ml
Full name	Rabr Antibody
Synonyms	AGFG2; HRBL; RABR; Arf-GAP domain and FG repeat-containing protein 2; HIV-1 Rev-binding protein-like protein; Rev/Rex activation domain-binding protein related; RAB-R

This product is for research use only, not for use in human, therapeutic or diagnostic procedure.

Background

AGFG2 is a member of the HIV-1 Rev binding protein (HRB) family and encodes a protein with one Arf-GAP zinc finger domain, several phe-gly (FG) motifs, and four asn-pro-phe (NPF) motifs. ArfGAP with FG repeats 2 interacts with Eps15 homology (EH) domains and plays a role in the Rev export pathway, which mediates the nucleocytoplasmic transfer of proteins and RNAs. Alternatively spliced transcript variants have been described, but their biological validity has not been determined.

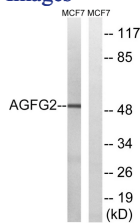
Recommended Dilution

WB: 1: 500 - 1: 2000

ELISA: 1: 40000

Not yet tested in other applications.

Images



Western blot analysis of lysates from MCF-7 cells, using AGFG2 Antibody. The lane on the right is blocked with the synthesized peptide.

Storage

-20°C for one year