

Rac GAP1 Polyclonal Antibody

Description

Product type	Primary Antibody
Code	BT-AP07591
Host	Rabbit
Isotype	IgG
Size	20ul, 50ul, 100ul
Immunogen	The antiserum was produced against synthesized peptide derived from human RGAP1. AA range:31-80
Mol wt	71027
Species reactivity	Human, Mouse
Clonality	Polyclonal
Recommended application	WB, IHC-p, IF, ELISA
Concentration	1 mg/ml
Full name	Rac GAP1 Antibody
Synonyms	RACGAP1; KIAA1478; MGCRCACGAP; Rac GTPase-activating protein 1; Male germ cell RacGap; MgcRacGAP; Protein CYK4 homolog; CYK4; HsCYK-4

This product is for research use only, not for use in human, therapeutic or diagnostic procedure.

Background

RACGAP1 encodes a GTPase-activating protein (GAP) that is a component of the centralspindlin complex. Rac GTPase activating protein 1 binds activated forms of Rho GTPases and stimulates GTP hydrolysis, which results in negative regulation of Rho-mediated signals. Rac GTPase activating protein 1 plays a regulatory role in cytokinesis, cell growth, and differentiation. Alternatively spliced transcript variants have been found for RACGAP1. There is a pseudogene for RACGAP1 on chromosome 12.

Recommended Dilution

WB: 1: 500 - 1: 2000

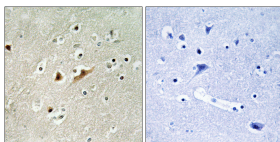
IHC: 1: 100 - 1: 300

IF: 1: 200 - 1: 1000

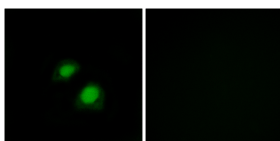
ELISA: 1: 20000

Not yet tested in other applications.

Images



Immunohistochemistry analysis of paraffin-embedded human brain tissue, using RGAP1 Antibody. The picture on the right is blocked with the synthesized peptide.



Immunofluorescence analysis of COS7 cells, using RGAP1 Antibody. The picture on the right is blocked with the synthesized peptide.

Storage

-20°C for one year

501 Changsheng S Rd, Nanhu Dist, Jiaxing, Zhejiang, China

Tel: 86 21 31007137 | E-mail: save@bt-laboratory.com | www.bt-laboratory.com