

Rac1/2/3/CDC42 Polyclonal Antibody

Description

Product type	Primary Antibody
Code	BT-AP07593
Host	Rabbit
Isotype	IgG
Size	20ul, 50ul, 100ul
Immunogen	The antiserum was produced against synthesized peptide derived from human Rac1/CDC42. AA range:38-87
Mol wt	21450/21311
Species reactivity	Human, Mouse, Rat
Clonality	Polyclonal
Recommended application	WB, IHC-p, ELISA
Concentration	1 mg/ml
Full name	Rac1/2/3/CDC42 Antibody
Synonyms	RAC1; TC25; MIG5; Ras-related C3 botulinum toxin substrate 1; Cell migration-inducing gene 5 protein; Ras-like protein TC25; p21-Rac1; RAC2; Ras-related C3 botulinum toxin substrate 2; GX; Small G pro

This product is for research use only, not for use in human, therapeutic or diagnostic procedure.

Background

Ras-related C3 botulinum toxin substrate 1 (rho family, small GTP binding protein Rac1) encoded by RAC1 is a GTPase which belongs to the RAS superfamily of small GTP-binding proteins. Members of this superfamily appear to regulate a diverse array of cellular events, including the control of cell growth, cytoskeletal reorganization, and the activation of protein kinases. Two transcript variants encoding different isoforms have been found for RAC1.

Recommended Dilution

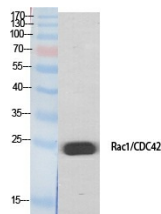
WB: 1: 500 - 1: 2000

IHC: 1: 100 - 1: 300

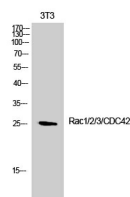
ELISA: 1: 20000

Not yet tested in other applications.

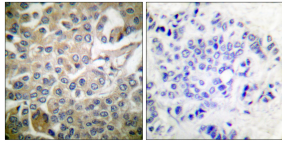
Images



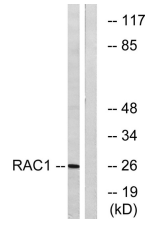
Western Blot analysis of various cells using Rac1/2/3/CDC42 Polyclonal Antibody



Western Blot analysis of 3T3 cells using Rac1/2/3/CDC42 Polyclonal Antibody



Immunohistochemistry analysis of paraffin-embedded human breast carcinoma tissue, using Rac1/CDC42 Antibody. The picture on the right is blocked with the synthesized peptide.



Western blot analysis of lysates from NIH/3T3 cells, treated with EGF 200ng/ml 30', using Rac1/CDC42 Antibody. The lane on the right is blocked with the synthesized peptide.

Storage

-20°C for one year

501 Changsheng S Rd, Nanhu Dist, Jiaxing, Zhejiang, China

Tel: 86 21 31007137 | E-mail: save@bt-laboratory.com | www.bt-laboratory.com