

Rad GTPase Polyclonal Antibody

Description

Product type	Primary Antibody
Code	BT-AP07597
Host	Rabbit
Isotype	IgG
Size	20ul, 50ul, 100ul
Immunogen	The antiserum was produced against synthesized peptide derived from human RAD. AA range:41-90
Mol wt	33245
Species reactivity	Human
Clonality	Polyclonal
Recommended application	WB, IHC-p, IF, ELISA
Concentration	1 mg/ml
Full name	Rad GTPase Antibody
Synonyms	RRAD; RAD; GTP-binding protein RAD; RAD1; Ras associated with diabetes

This product is for research use only, not for use in human, therapeutic or diagnostic procedure.

Background

RRAD (Ras-Related Associated With Diabetes) is a Protein Coding gene. Diseases associated with RRAD include diabetes mellitus, noninsulin-dependent. Among its related pathways are Gene Expression and Cell Cycle, Mitotic. Gene Ontology (GO) annotations related to RAB35 include GTP binding and calmodulin binding. An important paralog of RAB35 is HRAS.

Recommended Dilution

WB: 1: 500 - 1: 2000

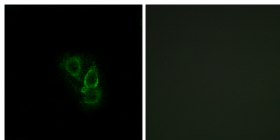
IHC: 1: 100 - 1: 300

IF: 1: 200 - 1: 1000

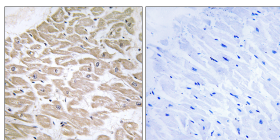
ELISA: 1: 20000

Not yet tested in other applications.

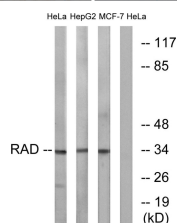
Images



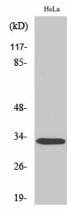
Immunofluorescence analysis of A549 cells, using RAD Antibody. The picture on the right is blocked with the synthesized peptide.



Immunohistochemistry analysis of paraffin-embedded human heart tissue, using RAD Antibody. The picture on the right is blocked with the synthesized peptide.



Western blot analysis of lysates from HeLa and HepG2/MCF-7 cells, using RAD Antibody. The lane on the right is blocked with the synthesized peptide.



Western Blot analysis of various cells using Rad GTPase Polyclonal Antibody

Storage

-20°C for one year

501 Changsheng S Rd, Nanhu Dist, Jiaxing, Zhejiang, China

Tel: 86 21 31007137 | E-mail: save@bt-laboratory.com | www.bt-laboratory.com