

Rad21 Polyclonal Antibody

Description

Product type	Primary Antibody
Code	BT-AP07603
Host	Rabbit
Isotype	IgG
Size	20ul, 50ul, 100ul
Immunogen	The antiserum was produced against synthesized peptide derived from human RAD21. AA range:521-570
Mol wt	71690
Species reactivity	Human, Mouse
Clonality	Polyclonal
Recommended application	WB, IHC-p, IF, ELISA
Concentration	1 mg/ml
Full name	Rad21 Antibody
Synonyms	RAD21; HR21; KIAA0078; NXP1; Double-strand-break repair protein rad21 homolog; hHR21; Nuclear matrix protein 1; NXP-1; SCC1 homolog

This product is for research use only, not for use in human, therapeutic or diagnostic procedure.

Background

The protein encoded by RAD21 (RAD21 cohesin complex component) is highly similar to the gene product of *Schizosaccharomyces pombe* rad21, a gene involved in the repair of DNA double-strand breaks, as well as in chromatid cohesion during mitosis. This protein is a nuclear phospho-protein, which becomes hyperphosphorylated in cell cycle M phase. The highly regulated association of this protein with mitotic chromatin specifically at the centromere region suggests its role in sister chromatid cohesion in mitotic cells.

Recommended Dilution

WB: 1: 500 - 1: 2000

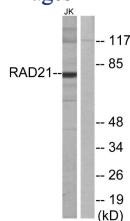
IHC: 1: 100 - 1: 300

IF: 1: 200 - 1: 1000

ELISA: 1: 5000

Not yet tested in other applications.

Images



Western blot analysis of lysates from Jurkat cells, using RAD21 Antibody. The lane on the right is blocked with the synthesized peptide.

Storage

-20°C for one year