

## Rad50 Polyclonal Antibody

### Description

<b>Product type</b>	Primary Antibody
<b>Code</b>	BT-AP07606
<b>Host</b>	Rabbit
<b>Isotype</b>	IgG
<b>Size</b>	20ul, 50ul, 100ul
<b>Immunogen</b>	The antiserum was produced against synthesized peptide derived from human RAD50. AA range:681-730
<b>Mol wt</b>	153892
<b>Species reactivity</b>	Human, Mouse, Rat
<b>Clonality</b>	Polyclonal
<b>Recommended application</b>	WB, IHC-p, ELISA
<b>Concentration</b>	1 mg/ml
<b>Full name</b>	Rad50 Antibody
<b>Synonyms</b>	RAD50; DNA repair protein RAD50; hRAD50

**This product is for research use only, not for use in human, therapeutic or diagnostic procedure.**

### Background

RAD50 double strand break repair protein encoded by RAD50 is highly similar to *Saccharomyces cerevisiae* Rad50, a protein involved in DNA double-strand break repair. RAD50 double strand break repair protein forms a complex with MRE11 and NBS1. RAD50 double strand break repair protein complex binds to DNA and displays numerous enzymatic activities that are required for nonhomologous joining of DNA ends. RAD50 double strand break repair protein, cooperating with its partners, is important for DNA double-strand break repair, cell cycle checkpoint activation, telomere maintenance, and meiotic recombination. Knockout studies of the mouse homolog suggest RAD50 is essential for cell growth and viability. Mutations in RAD50 are the cause of Nijmegen breakage syndrome-like disorder.

### Recommended Dilution

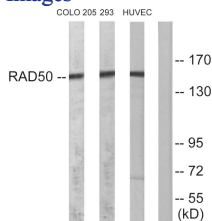
WB: 1: 500 - 1: 2000

IHC: 1: 100 - 1: 300

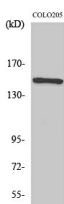
ELISA: 1: 20000

Not yet tested in other applications.

### Images



Western blot analysis of lysates from COLO205, 293, and HUVEC cells, using RAD50 Antibody. The lane on the right is blocked with the synthesized peptide.



Western Blot analysis of various cells using Rad50 Polyclonal Antibody diluted at 1:1000 cells nucleus.

## Storage

-20°C for one year

501 Changsheng S Rd, Nanhu Dist, Jiaxing, Zhejiang, China

Tel: 86 21 31007137 | E-mail: [save@bt-laboratory.com](mailto:save@bt-laboratory.com) | [www.bt-laboratory.com](http://www.bt-laboratory.com)