

Rad51C Polyclonal Antibody

Description

Product type	Primary Antibody
Code	BT-AP07610
Host	Rabbit
Isotype	IgG
Size	20ul, 50ul, 100ul
Immunogen	The antiserum was produced against synthesized peptide derived from human RAD51C. AA range:161-210
Mol wt	42190
Species reactivity	Human, Monkey
Clonality	Polyclonal
Recommended application	WB, IHC-p, IF, ELISA
Concentration	1 mg/ml
Full name	Rad51C Antibody
Synonyms	RAD51C; RAD51L2; DNA repair protein RAD51 homolog 3; R51H3; RAD51 homolog C; RAD51-like protein 2

This product is for research use only, not for use in human, therapeutic or diagnostic procedure.

Background

RAD51C is a member of the RAD51 family. RAD51 family members are highly similar to bacterial RecA and *Saccharomyces cerevisiae* Rad51 and are known to be involved in the homologous recombination and repair of DNA. RAD51 paralog C can interact with other RAD51 paralogs and is reported to be important for Holliday junction resolution. Mutations in RAD51C are associated with Fanconi anemia-like syndrome. RAD51C is one of four localized to a region of chromosome 17q23 where amplification occurs frequently in breast tumors. Overexpression of the four genes during amplification has been observed and suggests a possible role in tumor progression. Alternative splicing results in multiple transcript variants.

Recommended Dilution

WB: 1: 500 - 1: 2000

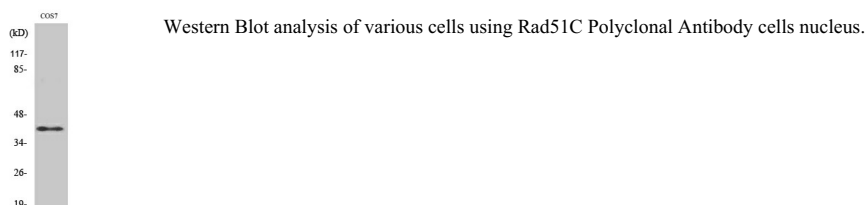
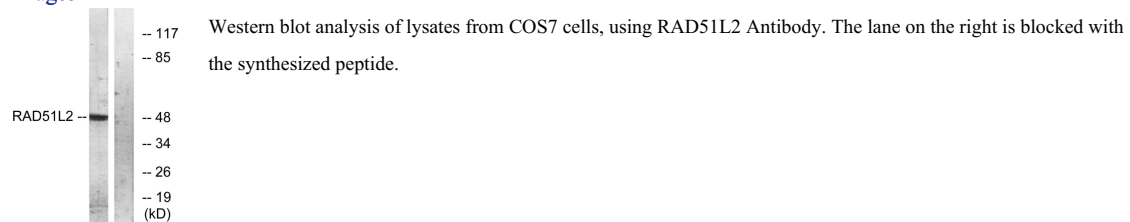
IHC: 1: 100 - 1: 300

IF: 1: 200 - 1: 1000

ELISA: 1: 5000

Not yet tested in other applications.

Images



Storage

-20°C for one year

501 Changsheng S Rd, Nanhu Dist, Jiaxing, Zhejiang, China

Tel: 86 21 31007137 | E-mail: save@bt-laboratory.com | www.bt-laboratory.com