

Radixin Polyclonal Antibody

Description

Product type	Primary Antibody
Code	BT-AP07617
Host	Rabbit
Isotype	IgG
Size	20ul, 50ul, 100ul
Immunogen	The antiserum was produced against synthesized peptide derived from human RDX. AA range:142-191
Mol wt	68564
Species reactivity	Human, Mouse, Rat
Clonality	Polyclonal
Recommended application	WB, ELISA
Concentration	1 mg/ml
Full name	Radixin Antibody
Synonyms	RDX; Radixin

This product is for research use only, not for use in human, therapeutic or diagnostic procedure.

Background

Radixin is a cytoskeletal protein that may be important in linking actin to the plasma membrane. It is highly similar in sequence to both ezrin and moesin. RDX has been localized by fluorescence in situ hybridization to 11q23. A truncated version representing a pseudogene (RDXP2) was assigned to Xp21. Another pseudogene that seemed to lack introns (RDXP1) was mapped to 11p by Southern and PCR analyses. Multiple alternatively spliced transcript variants encoding different isoforms have been found for RDX.

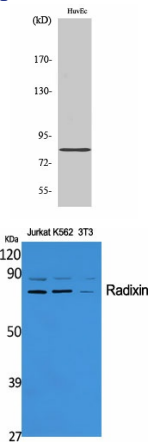
Recommended Dilution

WB: 1: 500 - 1: 2000

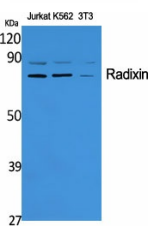
ELISA: 1: 10000

Not yet tested in other applications.

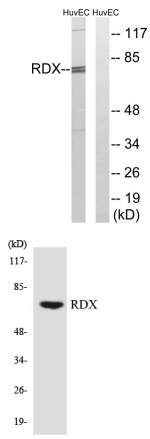
Images



Western Blot analysis of HuvEc cells using Radixin Polyclonal Antibody diluted at 1:2000



Western Blot analysis of various cells using Radixin Polyclonal Antibody diluted at 1:2000



Western blot analysis of lysates from HUVEC cells, using RDX Antibody. The lane on the right is blocked with the synthesized peptide.

Western blot analysis of the lysates from HT-29 cells using RDX antibody.

Storage

-20°C for one year

501 Changsheng S Rd, Nanhu Dist, Jiaxing, Zhejiang, China

Tel: 86 21 31007137 | E-mail: save@bt-laboratory.com | www.bt-laboratory.com