

## Raf-1 Polyclonal Antibody

### Description

<b>Product type</b>	Primary Antibody
<b>Code</b>	BT-AP07627
<b>Host</b>	Rabbit
<b>Isotype</b>	IgG
<b>Size</b>	20ul, 50ul, 100ul
<b>Immunogen</b>	The antiserum was produced against synthesized peptide derived from human C-RAF. AA range:11-60
<b>Mol wt</b>	73052
<b>Species reactivity</b>	Human, Mouse, Rat
<b>Clonality</b>	Polyclonal
<b>Recommended application</b>	WB, IHC-p, ELISA
<b>Concentration</b>	1 mg/ml
<b>Full name</b>	Raf-1 Antibody
<b>Synonyms</b>	RAF1; RAF; RAF proto-oncogene serine/threonine-protein kinase; Proto-oncogene c-RAF; cRaf; Raf-1

**This product is for research use only, not for use in human, therapeutic or diagnostic procedure.**

### Background

RAF1 (Raf-1 proto-oncogene, serine/threonine kinase) is the cellular homolog of viral raf gene (v-raf). The encoded protein is a MAP kinase kinase kinase (MAP3K), which functions downstream of the Ras family of membrane associated GTPases to which it binds directly. Once activated, the cellular RAF1 protein can phosphorylate to activate the dual specificity protein kinases MEK1 and MEK2, which in turn phosphorylate to activate the serine/threonine specific protein kinases, ERK1 and ERK2. Activated ERKs are pleiotropic effectors of cell physiology and play an important role in the control of gene expression involved in the cell division cycle, apoptosis, cell differentiation and cell migration. Mutations in RAF1 are associated with Noonan syndrome 5 and LEOPARD syndrome 2.

### Recommended Dilution

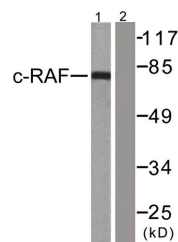
WB: 1: 500 - 1: 2000

IHC: 1: 100 - 1: 300

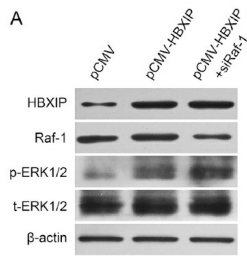
ELISA: 1: 5000

Not yet tested in other applications.

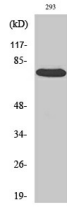
### Images



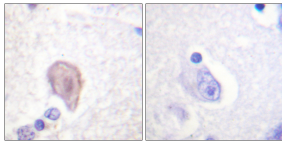
Western blot analysis of lysates from 293 cells, treated with PMA 125ng/ml 30', using C-RAF Antibody. The lane on the right is blocked with the synthesized peptide.



Western blot analysis in MCF-7 cells transfected with siRaf-1. *Cancer Letters* 355 (2014) 288–296



Western Blot analysis of various cells using Raf-1 Polyclonal Antibody diluted at 1:2000



Immunohistochemistry analysis of paraffin-embedded human brain tissue, using C-RAF Antibody.

The picture on the right is blocked with the synthesized peptide.

### Storage

-20°C for one year

501 Changsheng S Rd, Nanhu Dist, Jiaxing, Zhejiang, China

Tel: 86 21 31007137 | E-mail: [save@bt-laboratory.com](mailto:save@bt-laboratory.com) | [www.bt-laboratory.com](http://www.bt-laboratory.com)