

## Raf-B Polyclonal Antibody

### Description

<b>Product type</b>	Primary Antibody
<b>Code</b>	BT-AP07632
<b>Host</b>	Rabbit
<b>Isotype</b>	IgG
<b>Size</b>	20ul, 50ul, 100ul
<b>Immunogen</b>	The antiserum was produced against synthesized peptide derived from human B-RAF. AA range:576-625
<b>Mol wt</b>	84437
<b>Species reactivity</b>	Human, Mouse, Rat
<b>Clonality</b>	Polyclonal
<b>Recommended application</b>	WB, IHC-p, ELISA
<b>Concentration</b>	1 mg/ml
<b>Full name</b>	Raf-B Antibody
<b>Synonyms</b>	BRAF; BRAF1; RAFB1; Serine/threonine-protein kinase B-raf; Proto-oncogene B-Raf; p94; v-Raf murine sarcoma viral oncogene homolog B1

**This product is for research use only, not for use in human, therapeutic or diagnostic procedure.**

### Background

BRAF (B-Raf proto-oncogene, serine/threonine kinase) encodes a protein belonging to the raf/mil family of serine/threonine protein kinases. This protein plays a role in regulating the MAP kinase/ERKs signaling pathway, which affects cell division, differentiation, and secretion. Mutations in BRAF are associated with cardiofaciocutaneous syndrome, a disease characterized by heart defects, mental retardation and a distinctive facial appearance. Mutations in BRAF have also been associated with various cancers, including non-Hodgkin lymphoma, colorectal cancer, malignant melanoma, thyroid carcinoma, non-small cell lung carcinoma, and adenocarcinoma of lung. A pseudogene, which is located on chromosome X, has been identified for BRAF.

### Recommended Dilution

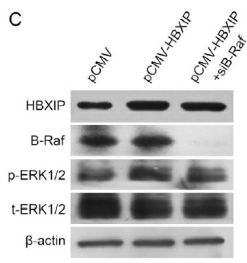
WB: 1: 500 - 1: 2000

IHC: 1: 100 - 1: 300

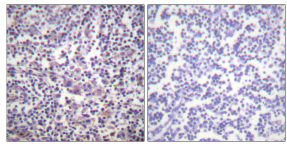
ELISA: 1: 10000

Not yet tested in other applications.

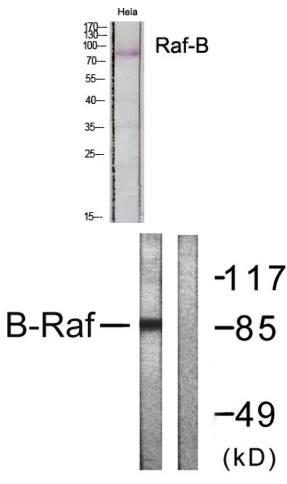
### Images



Western blot analysis in MCF-7 cells transfected with siB-Raf. Cancer Letters 355 (2014) 288–296



Immunohistochemistry analysis of paraffin-embedded human lymph node tissue, using B-RAF Antibody. The picture on the right is blocked with the synthesized peptide.



Western Blot analysis of various cells using Raf-B Polyclonal Antibody diluted at 1:500

Western blot analysis of lysates from K562 cells, using B-RAF Antibody. The lane on the right is blocked with the synthesized peptide.

**Storage**

-20°C for one year