

## Rag C Polyclonal Antibody

### Description

|                                |   |
|--------------------------------|---|
| <b>Product type</b>            | Primary Antibody  |
| <b>Code</b>                    | BT-AP07637  |
| <b>Host</b>                    | Rabbit  |
| <b>Isotype</b>                 | IgG   |
| <b>Size</b>                    | 20ul, 50ul, 100ul   |
| <b>Immunogen</b>               | The antiserum was produced against synthesized peptide derived from human RRAGC. AA range:302-351 |
| <b>Mol wt</b>                  | 44224   |
| <b>Species reactivity</b>      | Human, Mouse, Rat   |
| <b>Clonality</b>               | Polyclonal  |
| <b>Recommended application</b> | WB, ELISA   |
| <b>Concentration</b>           | 1 mg/ml   |
| <b>Full name</b>               | Rag C Antibody  |
| <b>Synonyms</b>                | RRAGC; Ras-related GTP-binding protein C; Rag C; RagC; GTPase-interacting protein 2; TIB929       |

**This product is for research use only, not for use in human, therapeutic or diagnostic procedure.**

### Background

RRAGC encodes a member of the GTR/RAG GTP-binding protein family. The ras related GTP binding C is a monomeric guanine nucleotide-binding protein which forms a heterodimer with RRAGA and RRAGB and is primarily localized to the cytoplasm. The encoded protein promotes intracellular localization of the mTOR complex. Alternative splicing results in multiple transcript variants.

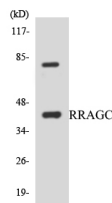
### Recommended Dilution

WB: 1: 500 - 1: 2000

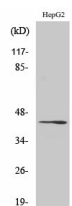
ELISA: 1: 10000

Not yet tested in other applications.

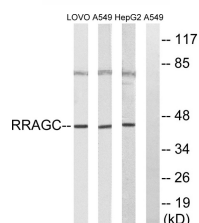
### Images



Western blot analysis of the lysates from HepG2 cells using RRAGC antibody.



Western Blot analysis of various cells using Rag C Polyclonal Antibody



Western blot analysis of lysates from HepG2, A549, and LOVO cells, using RRAGC Antibody. The lane on the right is blocked with the synthesized peptide.

## Storage

-20°C for one year

501 Changsheng S Rd, Nanhu Dist, Jiaxing, Zhejiang, China

Tel: 86 21 31007137 | E-mail: [save@bt-laboratory.com](mailto:save@bt-laboratory.com) | [www.bt-laboratory.com](http://www.bt-laboratory.com)