

RAGE Polyclonal Antibody

Description

Product type	Primary Antibody
Code	BT-AP07638
Host	Rabbit
Isotype	IgG
Size	20ul, 50ul, 100ul
Immunogen	The antiserum was produced against synthesized peptide derived from human MOK. AA range:261-310
Mol wt	48014
Species reactivity	Human
Clonality	Polyclonal
Recommended application	WB, IHC-p, IF, ELISA
Concentration	1 mg/ml
Full name	RAGE Antibody
Synonyms	MOK; RAGE; RAGE1; MAPK/MAK/MRK overlapping kinase; MOK protein kinase; Renal tumor antigen 1; RAGE-1

This product is for research use only, not for use in human, therapeutic or diagnostic procedure.

Background

MOK belongs to the MAP kinase superfamily. The gene was found to be regulated by caudal type transcription factor 2 (Cdx2) protein. The MOK protein kinase, which is localized to epithelial cells in the intestinal crypt, may play a role in growth arrest and differentiation of cells of upper crypt and lower villus regions. Multiple alternatively spliced transcript variants encoding different isoforms have been observed for this gene.

Recommended Dilution

WB: 1: 500 - 1: 2000

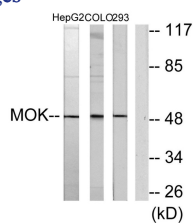
IHC: 1: 100 - 1: 300

IF: 1: 200 - 1: 1000

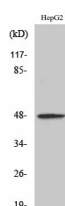
ELISA: 1: 5000

Not yet tested in other applications.

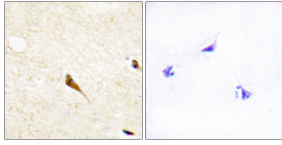
Images



Western blot analysis of lysates from HepG2, COLO205, and 293 cells, using MOK Antibody. The lane on the right is blocked with the synthesized peptide.



Western Blot analysis of various cells using RAGE Polyclonal Antibody



Immunohistochemistry analysis of paraffin-embedded human brain tissue, using MOK Antibody. The picture on the right is blocked with the synthesized peptide.

Storage

-20°C for one year

501 Changsheng S Rd, Nanhu Dist, Jiaxing, Zhejiang, China

Tel: 86 21 31007137 | E-mail: save@bt-laboratory.com | www.bt-laboratory.com