

## RAGE Polyclonal Antibody

### Description

<b>Product type</b>	Primary Antibody
<b>Code</b>	BT-AP07639
<b>Host</b>	Rabbit
<b>Isotype</b>	IgG
<b>Size</b>	20ul, 50ul, 100ul
<b>Immunogen</b>	The antiserum was produced against synthesized peptide derived from human RAGE. AA range:133-182
<b>Mol wt</b>	42803/36193
<b>Species reactivity</b>	Human
<b>Clonality</b>	Polyclonal
<b>Recommended application</b>	WB, IHC-p, ELISA
<b>Concentration</b>	1 mg/ml
<b>Full name</b>	RAGE Antibody
<b>Synonyms</b>	AGER; RAGE; Advanced glycosylation end product-specific receptor; Receptor for advanced glycosylation end products

**This product is for research use only, not for use in human, therapeutic or diagnostic procedure.**

### Background

The advanced glycosylation end product (AGE) receptor encoded by AGER is a member of the immunoglobulin superfamily of cell surface receptors. It is a multiligand receptor, and besides AGE, interacts with other molecules implicated in homeostasis, development, and inflammation, and certain diseases, such as diabetes and Alzheimer's disease. Many alternatively spliced transcript variants encoding different isoforms, as well as non-protein-coding variants, have been described for this gene (PMID: 18089847).

### Recommended Dilution

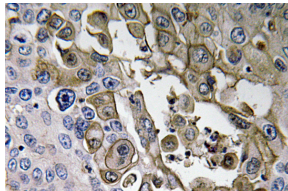
WB: 1: 500 - 1: 2000

IHC: 1: 100 - 1: 300

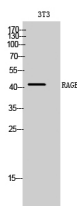
ELISA: 1: 20000

Not yet tested in other applications.

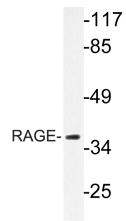
### Images



Immunohistochemistry analysis of RAGE antibody in paraffin-embedded human lung carcinoma tissue.



Western Blot analysis of 3T3 cells using RAGE Polyclonal Antibody diluted at 1:1000



Western blot analysis of lysate from LOVO cells, using RAGE antibody.

### Storage

-20°C for one year

501 Changsheng S Rd, Nanhu Dist, Jiaxing, Zhejiang, China

Tel: 86 21 31007137 | E-mail: [save@bt-laboratory.com](mailto:save@bt-laboratory.com) | [www.bt-laboratory.com](http://www.bt-laboratory.com)