

Raly Polyclonal Antibody

Description

Product type	Primary Antibody
Code	BT-AP07646
Host	Rabbit
Isotype	IgG
Size	20ul, 50ul, 100ul
Immunogen	The antiserum was produced against synthesized peptide derived from human RALY. AA range:71-120
Mol wt	32463
Species reactivity	Human, Mouse, Rat
Clonality	Polyclonal
Recommended application	WB, ELISA
Concentration	1 mg/ml
Full name	Raly Antibody
Synonyms	RALY; HNRPCL2; P542; RNA-binding protein Raly; Autoantigen p542; Heterogeneous nuclear ribonucleoprotein C-like 2; hnRNP core protein C-like 2; hnRNP associated with lethal yellow protein homolog

This product is for research use only, not for use in human, therapeutic or diagnostic procedure.

Background

RALY encodes a member of the heterogeneous nuclear ribonucleoprotein (hnRNP) gene family. RALY heterogeneous nuclear ribonucleoprotein may play a role in pre-mRNA splicing and in embryonic development. Alternate splicing results in multiple transcript variants.

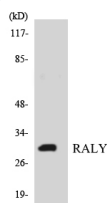
Recommended Dilution

WB: 1: 500 - 1: 2000

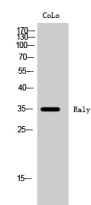
ELISA: 1: 10000

Not yet tested in other applications.

Images



Western blot analysis of the lysates from HT-29 cells using RALY antibody.



Western Blot analysis of CoLo cells using Raly Polyclonal Antibody cells nucleus.

Storage

-20°C for one year

501 Changsheng S Rd, Nanhu Dist, Jiaxing, Zhejiang, China

Tel: 86 21 31007137 | E-mail: save@bt-laboratory.com | www.bt-laboratory.com