

PP2A-C alpha(Phospho Tyr307) Polyclonal Antibody

Description

Product type	Primary Antibody
Code	BT-AP07647
Host	Rabbit
Isotype	IgG
Size	20ul, 50ul, 100ul
Immunogen	The antiserum was produced against synthesized peptide derived from human PP2A-alpha around the phosphorylation site of Tyr307. AA range:260-309
Mol wt	35594
Species reactivity	Human, Mouse, Rat
Clonality	Polyclonal
Recommended application	WB, IHC-p, IF, ICC, ELISA
Concentration	1 mg/ml
Full name	Serine/threonine-protein phosphatase 2A catalytic subunit alpha isoform
Synonyms	Serine/threonine-protein phosphatase 2A catalytic subunit alpha isoform; PPP2CA; Serine/threonine-protein phosphatase 2A catalytic subunit alpha isoform; PP2A-alpha; Replication protein C; RP-C

This product is for research use only, not for use in human, therapeutic or diagnostic procedure.

Background

This gene encodes the phosphatase 2A catalytic subunit. Protein phosphatase 2A is one of the four major Ser/Thr phosphatases, and it is implicated in the negative control of cell growth and division. It consists of a common heteromeric core enzyme, which is composed of a catalytic subunit and a constant regulatory subunit, that associates with a variety of regulatory subunits. This gene encodes an alpha isoform of the catalytic subunit.

Recommended Dilution

WB: 1: 500 - 1: 2000

IHC-p: 1: 100 - 1: 300

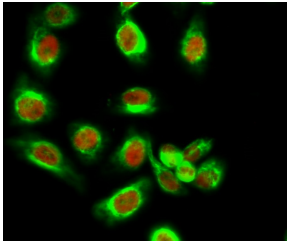
IF: 1: 200 - 1: 1000

ICC: 1: 200 - 1: 1000

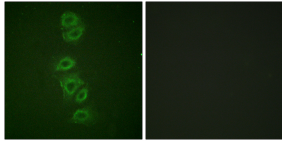
ELISA: 1: 5000

Not yet tested in other applications.

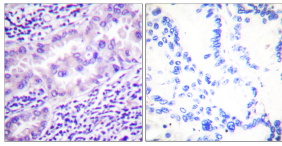
Images



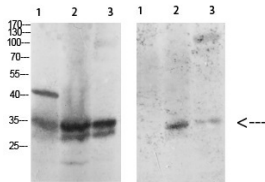
Immunofluorescence analysis of HeLa cell. PP2A-C α (phospho Tyr307) Polyclonal Antibody(Red) was diluted at 1:200(4°C overnight). HSP70 Monoclonal Antibody(3G10)(Green) was diluted at 1:200(4°C overnight).



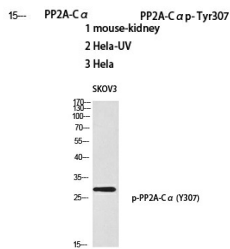
Immunofluorescence analysis of A549 cells, using PP2A-alpha (Phospho-Tyr307) Antibody. The picture on the right is blocked with the phospho peptide.



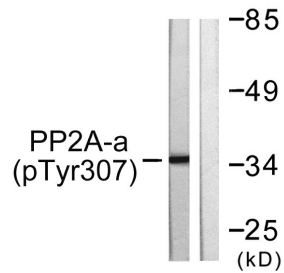
Immunohistochemistry analysis of paraffin-embedded human lung carcinoma, using PP2A-alpha (Phospho-Tyr307) Antibody. The picture on the right is blocked with the phospho peptide.



Western blot analysis of SKOV3 using p-PP2A-C α (Y307) antibody. Antibody was diluted at 1:1000



Western Blot analysis of various cells using Antibody diluted at 1:1000. Secondary antibody was diluted at 1:20000



Western blot analysis of lysates from A549 cells, using PP2A-alpha (Phospho-Tyr307) Antibody. The lane on the right is blocked with the phospho peptide.

Storage

-20°C for 1 year

501 Changsheng S Rd, Nanhu Dist, Jiaxing, Zhejiang, China

Tel: 86 21 31007137 | E-mail: save@bt-laboratory.com | www.bt-laboratory.com