

Ran BP-6 Polyclonal Antibody

Description

Product type	Primary Antibody
Code	BT-AP07651
Host	Rabbit
Isotype	IgG
Size	20ul, 50ul, 100ul
Immunogen	The antiserum was produced against synthesized peptide derived from human RANBP6. AA range:800-849
Mol wt	124714
Species reactivity	Human, Mouse, Rat, Monkey
Clonality	Polyclonal
Recommended application	WB, ELISA
Concentration	1 mg/ml
Full name	Ran BP-6 Antibody
Synonyms	RANBP6; Ran-binding protein 6; RanBP6

This product is for research use only, not for use in human, therapeutic or diagnostic procedure.

Background

RANBP6 (RAN Binding Protein 6) is a Protein Coding gene. Gene Ontology (GO) annotations related to this gene include binding. May function in nuclear protein import as nuclear transport receptor.

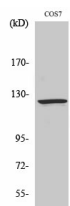
Recommended Dilution

WB: 1: 500 - 1: 2000

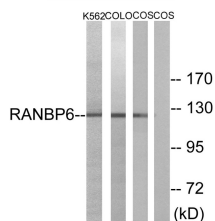
ELISA: 1: 10000

Not yet tested in other applications.

Images



Western Blot analysis of various cells using Ran BP-6 Polyclonal Antibody



Western blot analysis of lysates from COS7, K562, and COLO cells, using RANBP6 Antibody. The lane on the right is blocked with the synthesized peptide.

Storage

-20°C for one year