

Rap 2B Polyclonal Antibody

Description

Product type	Primary Antibody
Code	BT-AP07658
Host	Rabbit
Isotype	IgG
Size	20ul, 50ul, 100ul
Immunogen	The antiserum was produced against synthesized peptide derived from human RAP2B. AA range:98-147
Mol wt	20504
Species reactivity	Human, Mouse, Rat
Clonality	Polyclonal
Recommended application	WB, ELISA
Concentration	1 mg/ml
Full name	Rap 2B Antibody
Synonyms	RAP2B; Ras-related protein Rap-2b

This product is for research use only, not for use in human, therapeutic or diagnostic procedure.

Background

This intronless gene RAP2B belongs to a family of RAS-related genes. The proteins encoded by these genes share approximately 50% amino acid identity with the classical RAS proteins and have numerous structural features in common. The most striking difference between the RAP and RAS proteins resides in their 61st amino acid: glutamine in RAS is replaced by threonine in RAP proteins. Evidence suggests that this protein may be polyisoprenylated and palmitoylated.

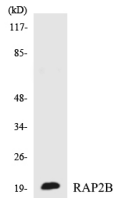
Recommended Dilution

WB: 1: 500 - 1: 2000

ELISA: 1: 20000

Not yet tested in other applications.

Images



Western blot analysis of the lysates from COLO205 cells using RAP2B antibody.

Storage

-20°C for one year