

Rap 2C Polyclonal Antibody

Description

Product type	Primary Antibody
Code	BT-AP07659
Host	Rabbit
Isotype	IgG
Size	20ul, 50ul, 100ul
Immunogen	The antiserum was produced against synthesized peptide derived from human RAP2C. AA range:97-146
Mol wt	20745
Species reactivity	Human, Mouse
Clonality	Polyclonal
Recommended application	WB, ELISA
Concentration	1 mg/ml
Full name	Rap 2C Antibody
Synonyms	RAP2C; Ras-related protein Rap-2c

This product is for research use only, not for use in human, therapeutic or diagnostic procedure.

Background

RAP2C encoded by this gene is a member of the Ras-related protein subfamily of the Ras GTPase superfamily. Members of this family are small GTPases that act as molecular switches to regulate cellular proliferation, differentiation, and apoptosis. Ras-related protein Rap-2c has been reported to activate in vitro transcriptional activity of the serum response element. Alternative splicing results in multiple transcript variants.

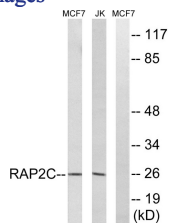
Recommended Dilution

WB: 1: 500 - 1: 2000

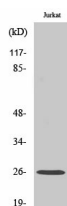
ELISA: 1: 5000

Not yet tested in other applications.

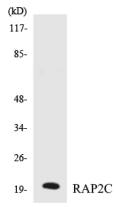
Images



Western blot analysis of lysates from Jurkat and MCF-7 cells, using RAP2C Antibody. The lane on the right is blocked with the synthesized peptide.



Western Blot analysis of various cells using Rap 2C Polyclonal Antibody diluted at 1:500



Western blot analysis of the lysates from K562 cells using RAP2C antibody.

Storage

-20°C for one year

501 Changsheng S Rd, Nanhu Dist, Jiaxing, Zhejiang, China

Tel: 86 21 31007137 | E-mail: save@bt-laboratory.com | www.bt-laboratory.com