

## RAP1 Polyclonal Antibody

### Description

Product type	Primary Antibody
Code	BT-AP07660
Host	Rabbit
Isotype	IgG
Size	20ul, 50ul, 100ul
Immunogen	The antiserum was produced against synthesized peptide derived from human RAP1. AA range:203-252
Mol wt	44260
Species reactivity	Human
Clonality	Polyclonal
Recommended application	WB, ELISA
Concentration	1 mg/ml
Full name	RAP1 Antibody
Synonyms	TERF2IP; DRIP5; RAP1; PP8000; Telomeric repeat-binding factor 2-interacting protein 1; TERF2-interacting telomeric protein 1; TRF2-interacting telomeric protein 1; Dopamine receptor-interacting protei

This product is for research use only, not for use in human, therapeutic or diagnostic procedure.

### Background

TERF2IP encodes a protein that is part of a complex involved in telomere length regulation. Pseudogenes are present on chromosomes 5 and 22.

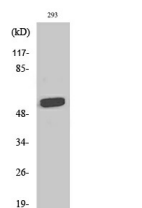
### Recommended Dilution

WB: 1: 500 - 1: 2000

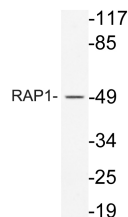
ELISA: 1: 10000

Not yet tested in other applications.

### Images



Western Blot analysis of various cells using RAP1 Polyclonal Antibody diluted at 1:500



Western blot analysis of ystate from 293 cells, using RAP1 antibody.

### Storage

-20°C for one year

