

RASL10B Polyclonal Antibody

Description

| | |
|--------------------------------|---|
| Product type | Primary Antibody |
| Code | BT-AP07676 |
| Host | Rabbit |
| Isotype | IgG |
| Size | 20ul, 50ul, 100ul |
| Immunogen | Synthesized peptide derived from RASL10B . at AA range: 80-160 |
| Mol wt | 23229 |
| Species reactivity | Human, Mouse |
| Clonality | Polyclonal |
| Recommended application | WB, ELISA |
| Concentration | 1 mg/ml |
| Full name | RASL10B Antibody |
| Synonyms | RASL10B; Ras-like protein family member 10B; Ras-like protein VTS58635; Ras-related protein 17; RRP17 |

This product is for research use only, not for use in human, therapeutic or diagnostic procedure.

Background

RASL10B (RAS Like Family 10 Member B) is a Protein Coding gene. GO annotations related to this gene include GTP binding. An important paralog of this gene is RASL10A.

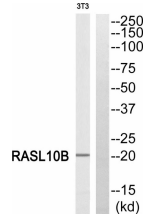
Recommended Dilution

WB: 1: 500 - 1: 2000

ELISA: 1: 40000

Not yet tested in other applications.

Images



Western blot analysis of RASL10B Antibody. The lane on the right is blocked with the RASL10B peptide.

Storage

-20°C for one year