

RASSF2 Polyclonal Antibody

Description

| | |
|-------------------------|--|
| Product type | Primary Antibody |
| Code | BT-AP07679 |
| Host | Rabbit |
| Isotype | IgG |
| Size | 20ul, 50ul, 100ul |
| Immunogen | The antiserum was produced against synthesized peptide derived from human RASSF2. AA range:109-158 |
| Mol wt | 37790 |
| Species reactivity | Human, Mouse, Rat |
| Clonality | Polyclonal |
| Recommended application | WB, ELISA |
| Concentration | 1 mg/ml |
| Full name | RASSF2 Antibody |
| Synonyms | RASSF2; KIAA0168; Ras association domain-containing protein 2 |

This product is for research use only, not for use in human, therapeutic or diagnostic procedure.

Background

RASSF2 (Ras association domain family member 2) encodes a protein that contains a Ras association domain. Similar to its cattle and sheep counterparts, RASSF2 is located near the prion gene. Two alternatively spliced transcripts encoding the same isoform have been reported.

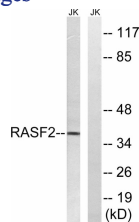
Recommended Dilution

WB: 1: 500 - 1: 2000

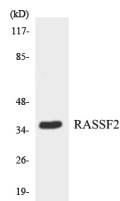
ELISA: 1: 20000

Not yet tested in other applications.

Images



Western blot analysis of lysates from Jurkat cells, using RASSF2 Antibody. The lane on the right is blocked with the synthesized peptide.



Western blot analysis of the lysates from HepG2 cells using RASSF2 antibody.

Storage

-20°C for one year