

RASSF7 Polyclonal Antibody

Description

Product type	Primary Antibody
Code	BT-AP07682
Host	Rabbit
Isotype	IgG
Size	20ul, 50ul, 100ul
Immunogen	The antiserum was produced against synthesized peptide derived from human RASSF7. AA range:159-208
Mol wt	39945
Species reactivity	Human, Mouse
Clonality	Polyclonal
Recommended application	IHC-p, ELISA
Concentration	1 mg/ml
Full name	RASSF7 Antibody
Synonyms	RASSF7; C11orf13; HRC1; Ras association domain-containing protein 7; HRAS1-related cluster protein 1

This product is for research use only, not for use in human, therapeutic or diagnostic procedure.

Background

RASSF7, also named as HRAS1 and HRC1, is a member of the RASSF family contain a highly conserved Ras association domain (RalGDS/AF-6 or RA) and function as Ras effectors tumor suppressors. RASSF7, RASSF8, RASSF9 and RASSF10 are four evolutionary conserved proteins that are collectively known as the N-terminal RASSF family. RASSF7 is believed to play an essential role in mitosis. RASSF7 has been shown to influence cell failure to form mitotic spindle and also cause nuclear breakdown and apoptosis. The antibody can recognizes all the 3 isoform of RASS7.

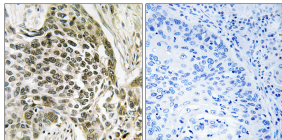
Recommended Dilution

IHC: 1: 100 - 1: 300

ELISA: 1: 5000

Not yet tested in other applications.

Images



Immunohistochemistry analysis of paraffin-embedded human lung carcinoma tissue, using RASSF7 Antibody. The picture on the right is blocked with the synthesized peptide.

Storage

-20°C for one year