

RASSF8 Polyclonal Antibody

Description

Product type	Primary Antibody
Code	BT-AP07683
Host	Rabbit
Isotype	IgG
Size	20ul, 50ul, 100ul
Immunogen	Synthesized peptide derived from RASSF8 . at AA range: 60-140
Mol wt	48327
Species reactivity	Human, Rat
Clonality	Polyclonal
Recommended application	WB, ELISA
Concentration	1 mg/ml
Full name	RASSF8 Antibody
Synonyms	RASSF8; C12orf2; Ras association domain-containing protein 8; Carcinoma-associated protein HOJ-1

This product is for research use only, not for use in human, therapeutic or diagnostic procedure.

Background

RASSF8 encodes a member of the Ras-association domain family (RASSF) of tumor suppressor proteins. This gene is essential for maintaining adherens junction function in epithelial cells and has a role in epithelial cell migration. It is a lung tumor suppressor gene candidate. A chromosomal translocation t(12;22)(p11. :q13.) leading to the fusion of this gene and the FBLN1 gene is found in a complex type of synpolydactyly. Multiple alternatively spliced transcript variants encoding different isoforms have been found for this gene.

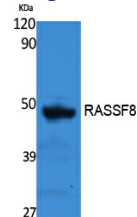
Recommended Dilution

WB: 1: 500 - 1: 2000

ELISA: 1: 40000

Not yet tested in other applications.

Images



Western Blot analysis of extracts from rat stomach, using RASSF8 Polyclonal Antibody. Secondary antibody was diluted at 1:20000

Storage

-20°C for one year