

Rb Polyclonal Antibody

Description

Product type	Primary Antibody
Code	BT-AP07690
Host	Rabbit
Isotype	IgG
Size	20ul, 50ul, 100ul
Immunogen	Synthesized peptide derived from the C-terminal region of human Rb.
Mol wt	106159
Species reactivity	Human, Mouse, Rat
Clonality	Polyclonal
Recommended application	WB, ELISA
Concentration	1 mg/ml
Full name	Rb Antibody
Synonyms	RB1; Retinoblastoma-associated protein; p105-Rb; pRb; Rb; pp110

This product is for research use only, not for use in human, therapeutic or diagnostic procedure.

Background

The protein encoded by RB1 (RB transcriptional corepressor 1) is a negative regulator of the cell cycle and was the first tumor suppressor gene found. The encoded protein also stabilizes constitutive heterochromatin to maintain the overall chromatin structure. The active, hypophosphorylated form of the protein binds transcription factor E2F1. Defects in RB1 are a cause of childhood cancer retinoblastoma (RB), bladder cancer, and osteogenic sarcoma.

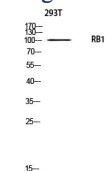
Recommended Dilution

WB: 1: 500 - 1: 2000

ELISA: 1: 10000

Not yet tested in other applications.

Images



Western blot analysis of 293T using RB1 antibody. Antibody was diluted at 1:500. Secondary antibody was diluted at 1:20000 cells nucleus.

Storage

-20°C for one year