

CHST5 Polyclonal Antibody

Description

Product type	Primary Antibody
Code	BT-AP07695
Host	Rabbit
Isotype	IgG
Size	20ul, 50ul, 100ul
Immunogen	Synthesized peptide derived from part region of human protein
Mol wt	N/A
Species reactivity	Human, Rat, Mouse
Clonality	Polyclonal
Recommended application	WB, ELISA
Concentration	1 mg/ml
Full name	Carbohydrate sulfotransferase 5
Synonyms	Carbohydrate sulfotransferase 5 ;EC 2.8.2.-;Galactose/N-acetylglucosamine/N-acetylglucosamine 6-O-sulfotransferase 4-alpha;GST4-alpha;Intestinal N-acetylglucosamine-6-O-sulfotransferase;I-GlcN

This product is for research use only, not for use in human, therapeutic or diagnostic procedure.

Background

The protein encoded by this gene belongs to the Gal/GalNAc/GlcNAc 6-O-sulfotransferase (GST) family, members of which catalyze the transfer of sulfate to position 6 of galactose (Gal), N-acetylgalactosamine (GalNAc), or N-acetylglucosamine (GlcNAc) residues within proteoglycans, and sulfation of O-linked sugars of mucin-type acceptors. Carbohydrate sulfation plays a critical role in many biologic processes. This gene is predominantly expressed in colon and small intestine.

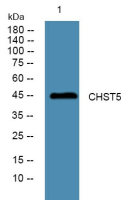
Recommended Dilution

WB: 1: 500 - 1: 2000

ELISA: 1: 5000 - 1: 20000

Not yet tested in other applications.

Images



Western blot analysis of lysates from Jarkat cells, primary antibody was diluted at 1:1000, 4°C overnight

Storage

-20°C for 1 year