

RB3 Polyclonal Antibody

Description

Product type	Primary Antibody
Code	BT-AP07697
Host	Rabbit
Isotype	IgG
Size	20ul, 50ul, 100ul
Immunogen	The antiserum was produced against synthesized peptide derived from human STMN4. AA range:140-189
Mol wt	22071
Species reactivity	Human, Mouse, Rat
Clonality	Polyclonal
Recommended application	WB, IHC-p, ELISA
Concentration	1 mg/ml
Full name	RB3 Antibody
Synonyms	STMN4; Stathmin-4; Stathmin-like protein B3; RB3

This product is for research use only, not for use in human, therapeutic or diagnostic procedure.

Background

RB3 (Stathmin-4), encoded by STMN4 gene, is a neuron-specific homologue of the SCG10/stathmin family proteins, possessing a unique N-terminal membrane-associated domain and the stathmin-like domain at the C terminus, which promotes microtubule (MT) catastrophe and/or tubulin sequestering. Stathmin is a ubiquitous cytosolic phosphoprotein, preferentially expressed in the nervous system, and described as a relay integrating diverse intracellular signaling pathways. RB3 is consistently up-regulated in differentiated neuroblastoma cells, and stable expression of transfected RB3 could induce differentiation, suggesting a role of RB3 during neuroblastoma differentiation. Moreover, increased RB3 is a unique response protein in the stathmin-related proteins following optical nerve axotomy and RB3 may be a critical target for neurodegenerative diseases.

Recommended Dilution

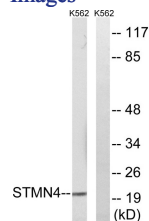
WB: 1: 500 - 1: 2000

IHC: 1: 100 - 1: 300

ELISA: 1: 40000

Not yet tested in other applications.

Images



Western blot analysis of lysates from K562 cells, using STMN4 Antibody. The lane on the right is blocked with the synthesized peptide.

Storage

-20°C for one year