

## RBM16 Polyclonal Antibody

### Description

<b>Product type</b>	Primary Antibody
<b>Code</b>	BT-AP07710
<b>Host</b>	Rabbit
<b>Isotype</b>	IgG
<b>Size</b>	20ul, 50ul, 100ul
<b>Immunogen</b>	Synthesized peptide derived from RBM16 . at AA range: 550-630
<b>Mol wt</b>	140519
<b>Species reactivity</b>	Human, Mouse, Rat
<b>Clonality</b>	Polyclonal
<b>Recommended application</b>	WB, ELISA
<b>Concentration</b>	1 mg/ml
<b>Full name</b>	RBM16 Antibody
<b>Synonyms</b>	SCAF8; CCAP7; KIAA1116; RBM16; Protein SCAF8; CDC5L complex-associated protein 7; RNA-binding motif protein 16; SR-related and CTD-associated factor 8

**This product is for research use only, not for use in human, therapeutic or diagnostic procedure.**

### Background

May play a role in mRNA processing.

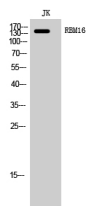
### Recommended Dilution

WB: 1: 500 - 1: 2000

ELISA: 1: 10000

Not yet tested in other applications.

### Images



Western Blot analysis of JK cells using RBM16 Polyclonal Antibody cells nucleus.

### Storage

-20°C for one year