

RBM26 Polyclonal Antibody

Description

Product type	Primary Antibody
Code	BT-AP07711
Host	Rabbit
Isotype	IgG
Size	20ul, 50ul, 100ul
Immunogen	The antiserum was produced against synthesized peptide derived from human RBM26. AA range:711-760
Mol wt	113597
Species reactivity	Human, Mouse
Clonality	Polyclonal
Recommended application	WB, IHC-p, ELISA
Concentration	1 mg/ml
Full name	RBM26 Antibody
Synonyms	RBM26; C13orf10; RNA-binding protein 26; CTCL tumor antigen se70-2; RNA-binding motif protein 26

This product is for research use only, not for use in human, therapeutic or diagnostic procedure.

Background

RBM26 (RNA Binding Motif Protein 26) is a Protein Coding gene. GO annotations related to this gene include nucleic acid binding and nucleotide binding. An important paralog of this gene is ENSG00000275740.

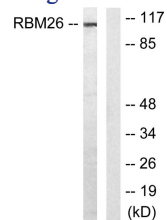
Recommended Dilution

WB: 1: 500 - 1: 2000

ELISA: 1: 10000

Not yet tested in other applications.

Images



Western blot analysis of lysates from Jurkat cells, using RBM26 Antibody. The lane on the right is blocked with the synthesized peptide.

Storage

-20°C for one year